

 **Courtyard Type**

Courtyard Style Villas



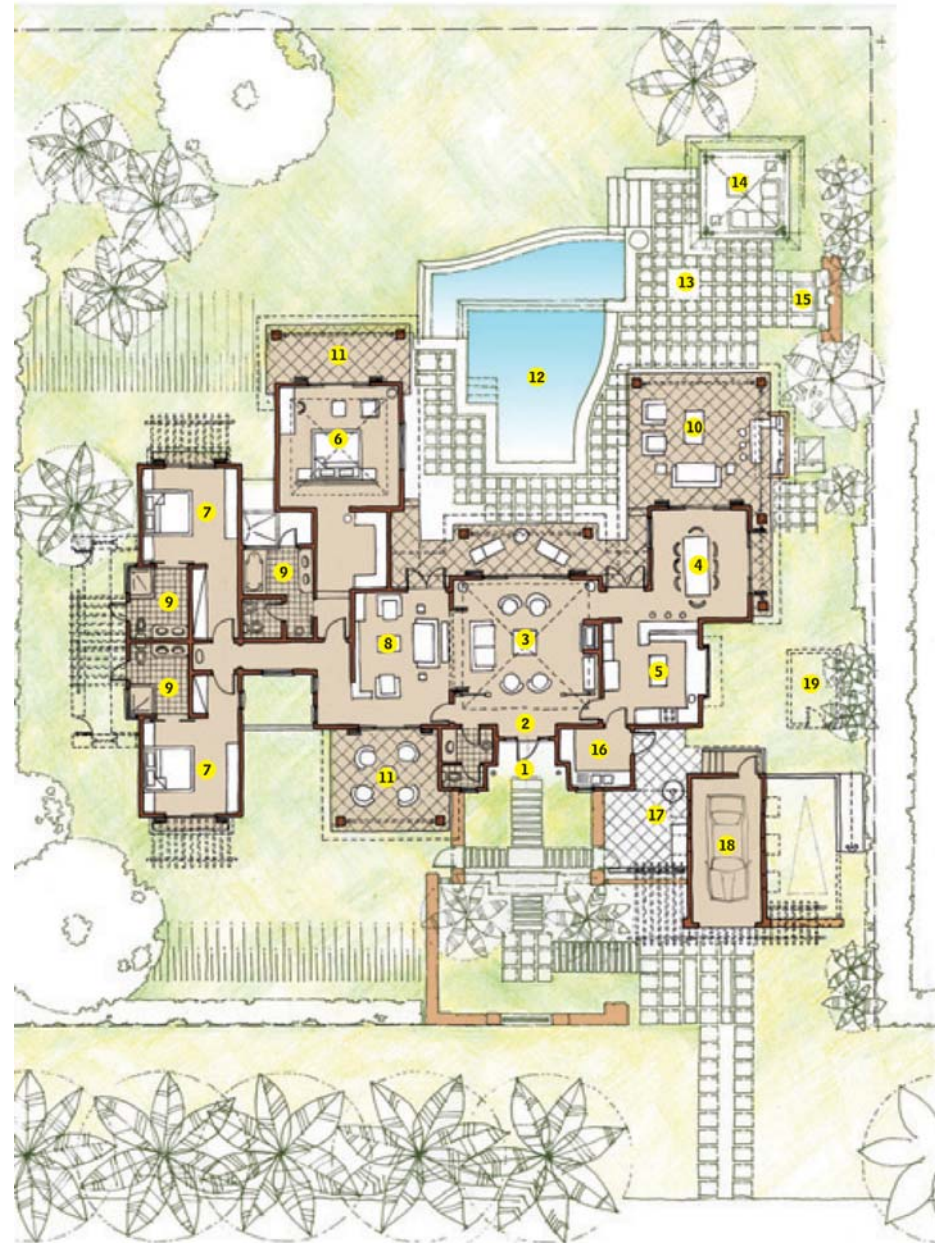
Detached plantation-style villa with garage, set around a sheltered courtyard with large patio, infinity pool and secluded landscaped tropical garden



VILLAS VALRICHE
MAURITIUS

Courtyard Type

3 Bedrooms (Ground Floor)

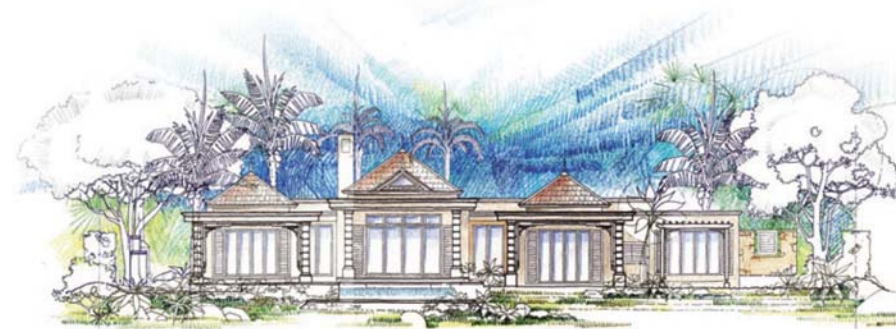


Minimum Site Width 35m

Ground floor plan



Street elevation



Garden elevation

Legend

1. Entrance
2. Lobby
3. Living Room
4. Dining Room
5. Kitchen
6. Master Suite
7. Bedroom
8. Study/TV
9. Bath
10. Veranda
11. Porch
12. Swimming Pool
13. Terrace
14. Kiosk
15. Bbq
16. Scullery
17. Yard
18. Garage
19. Store

Total Covered Area	353
Total Standard NIA	314
Enclosed Living NIA	202
Ground Floor NIA	202
First Floor NIA	0
Semi Enclosed NIA	95
Entrance Porch	5
Veranda	35
Porch 1	24
Porch 2	18
Porch 3	13
Enclosed Garage NIA	17
Swimming Pool Swim Area	
Standard	20
Option 1	24
Option 2	32
Options NIA	
Double Garage	18
Store	5
Gazebo	9
Timber Deck	70

Notes:

1. NIA = Net Internal Area.
2. All areas are in square metres.
3. All areas are measured from the internal face of walls for determining NIA and to the outer edge of concrete slabs for Covered Areas
4. Area for store may vary slightly for villas on plots with side access
5. Plan indicated for 0-10% slope
6. Landscaping layout indicative
7. Plan is generic and may vary depending on the selected style and variant

In terms of international norms on measuring standards for marketing purposes: "Covered Area" includes all covered areas measured to the outside of all external walls, covered overhangs and verandas. However in the contract documentation, based on the legal system in Mauritius and prepared by registered Notaries, areas are expressed as NIA (as defined in the glossary of the Specifications document). Depending on the design configuration of each villa, the difference between the "Covered Area" and the "Net Internal Area" will vary between 5% and 15%.

Plan Code: CRT3BG0Y